

RINA DIRISIO
REAL ESTATE, BUT BETTER



2088 SAXON ROAD

OAKVILLE



BRONTE BECKONS! WELCOME TO THIS BEAUTIFUL, RENOVATED (2019) 4-BEDROOM, CUSTOM HOME ON A PRIVATE CORNER LOT IN AN EXCLUSIVE ENCLAVE SURROUNDING THE PICTURESQUE SEABROOK PARK.

Located in sought-after Bronte, this home offers a fabulous lifestyle experience, just a 6-minute drive to the vibrant Bronte Village, where trendy boutiques, cozy cafés, and acclaimed restaurants await. Spend sun-soaked summer days at Bronte Heritage Waterfront Park and Bronte Harbour, on Lake Ontario, where breathtaking scenery and outdoor adventure abound. Every convenience is at your fingertips—you can walk to the South Oakville Shopping Plaza for necessities and it's a 5-minute drive to Coronation Park, host of many waterfront activities. The QEW Highway and Bronte GO Train Station is a 4-minute drive, making commuting a breeze.

Set on a premium corner lot enveloped by mature trees, this residence is as appealing outside as it is within. A concrete-trimmed double driveway leads to the attached single garage, while a welcoming covered front veranda invites you to step inside. The sun-drenched backyard offers an extra-large side yard, perfect for children to play safely or for enjoying tranquil afternoons in privacy.

The bright, airy foyer with custom built-in bench seating greets you through the upgraded entry door and seamlessly connects to the open-concept main floor. The living area exudes warmth and comfort, featuring hardwood flooring and an inviting electric fireplace, while the spacious dining room extends the living space outdoors with a walkout accessing the rear yard. With style and functionality, the kitchen boasts plenty of white cabinetry, under-cabinet lighting, gleaming granite countertops, and stainless steel appliances. The oversized island with a breakfast bar offers the perfect spot for casual dining and lively conversation.

The second level hosts a thoughtfully designed open-concept office niche, ideal for remote work or study. Two sun-filled bedrooms, each with rich hardwood flooring, provide comfort and style, and the beautifully appointed 4-piece bathroom highlights elegant crown mouldings, dark cabinetry with a granite countertop, and a soaker tub/shower combination. Ascend to the top floor, where tranquillity reigns. Here, you'll find two additional bedrooms, including the sprawling primary suite, complete with a walk-in closet featuring custom organizers, and the lavish 4-piece ensuite bathroom impresses with an oversized glass-enclosed shower, creating a spa-like retreat.

Designed for relaxation and productivity, the generous lower-level family room, illuminated by large above-grade windows —Perfect for gathering with loved ones. A private office ensures a quiet workspace, while an exterior door in the hall provides direct access to the yard. Venture down to the finished basement, where a spacious recreation room with laminate flooring awaits, ideal for a home theatre, games area, or fitness space.

With unrivalled access to nature, top-tier amenities, and effortless commuting, this exceptional home offers the best of Bronte living. Don't miss the opportunity to make this stunning custom-built residence your own!

FOYER

- Upgraded entry door system with two sidelights
- Custom built-in bench seating and storage shelves
- Mosaic floor tiles
- Pot lights
- Double door closet
- Half-wall open to the living room
- Impressive staircase with dark-stained treads and handrails and floating staircase to the upper level





LIVING ROOM (11'4" X 10'0")

- Upgraded hardwood floor
- Oversized window overlooking the front veranda
- Electric fireplace with a classic white mantel





DINING ROOM (10'10" X 8'6")

- Upgraded hardwood floor
- Chandelier with black metal trim
- Sliding glass doors to the backyard



KITCHEN 12'10" X 8'11"

- Extensive white cabinetry
- Upper cabinets with crown mouldings and under-cabinet lighting
- Several pot drawers
- Deep double door pantry
- Oversized island with breakfast bar
- Granite counters
- Pot lights
- Upgraded hardwood floor
- Stainless steel appliances including a fridge with bottom-mount freezer drawer, electric range, built-in microwave and built-in dishwasher





SECOND LEVEL



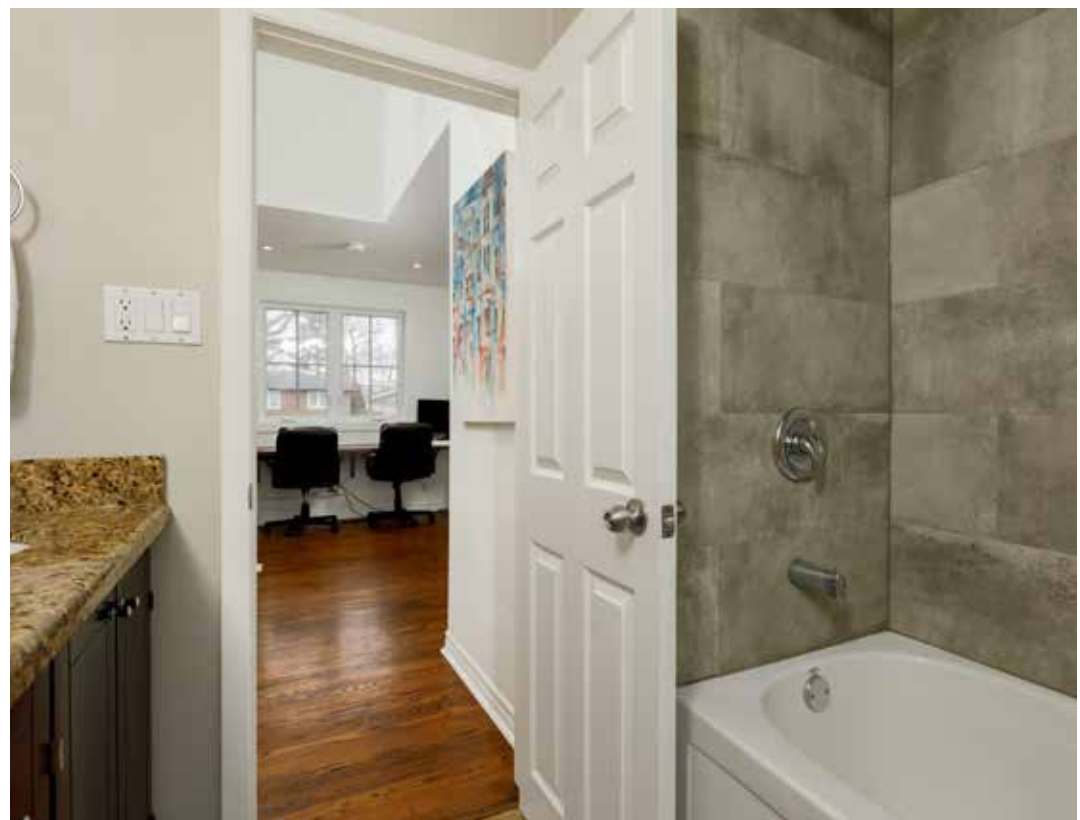
LANDING/OFFICE NICHE (12'5" X 8'11")

- Upgraded hardwood floor
- Large window
- Open to the staircase



BATHROOM (4-PIECE)

- Dark-finished cabinetry with a bank of drawers
- Granite counter with an under-mount sink
- Vari-size stone-look floor tiles arranged in an intricate pattern
- Crown mouldings
- Window
- Soaker tub/shower combination with oversized stone-look tile surround



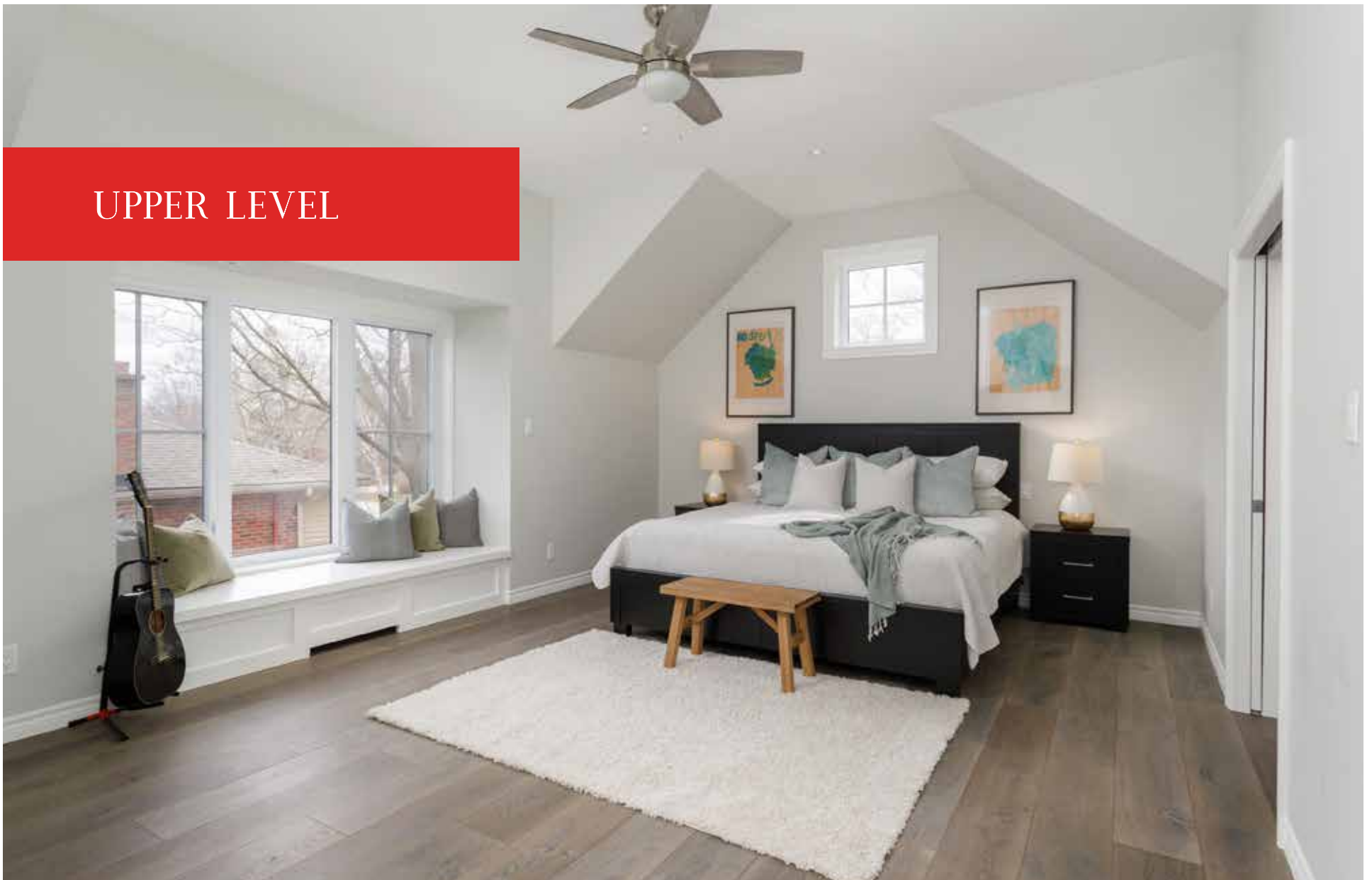


BEDROOM 2 (12'1" X 9'10")
BEDROOM 3 (12'5" X 8'0")

- Two bright bedrooms on this level feature hardwood floors, large windows, and ample closet space.



UPPER LEVEL



PRIMARY BEDROOM (21'0" X 13'8")

- Soaring dormer-style ceiling
- Pot lights and ceiling fan
- Upgraded hardwood floor
- Large, boxed window with bench seating and storage below
- Additional accent window





ENSUITE BATHROOM (4-PIECE)

- Plenty of white cabinetry with a centre bank of drawers
- Marble counter with two under-mount sinks and upgraded wide-spread faucets
- Square mosaic floor tiles
- Window
- Oversized shower with a recessed double-height shampoo niche, large stone-look tile surround and frameless glass enclosure and door

WALK-IN CLOSET (12'5" X 6'6")

- Pocket door
- Deluxe organizer with double wardrobe hanging space
- Good-sized window
- Upgraded hardwood floor

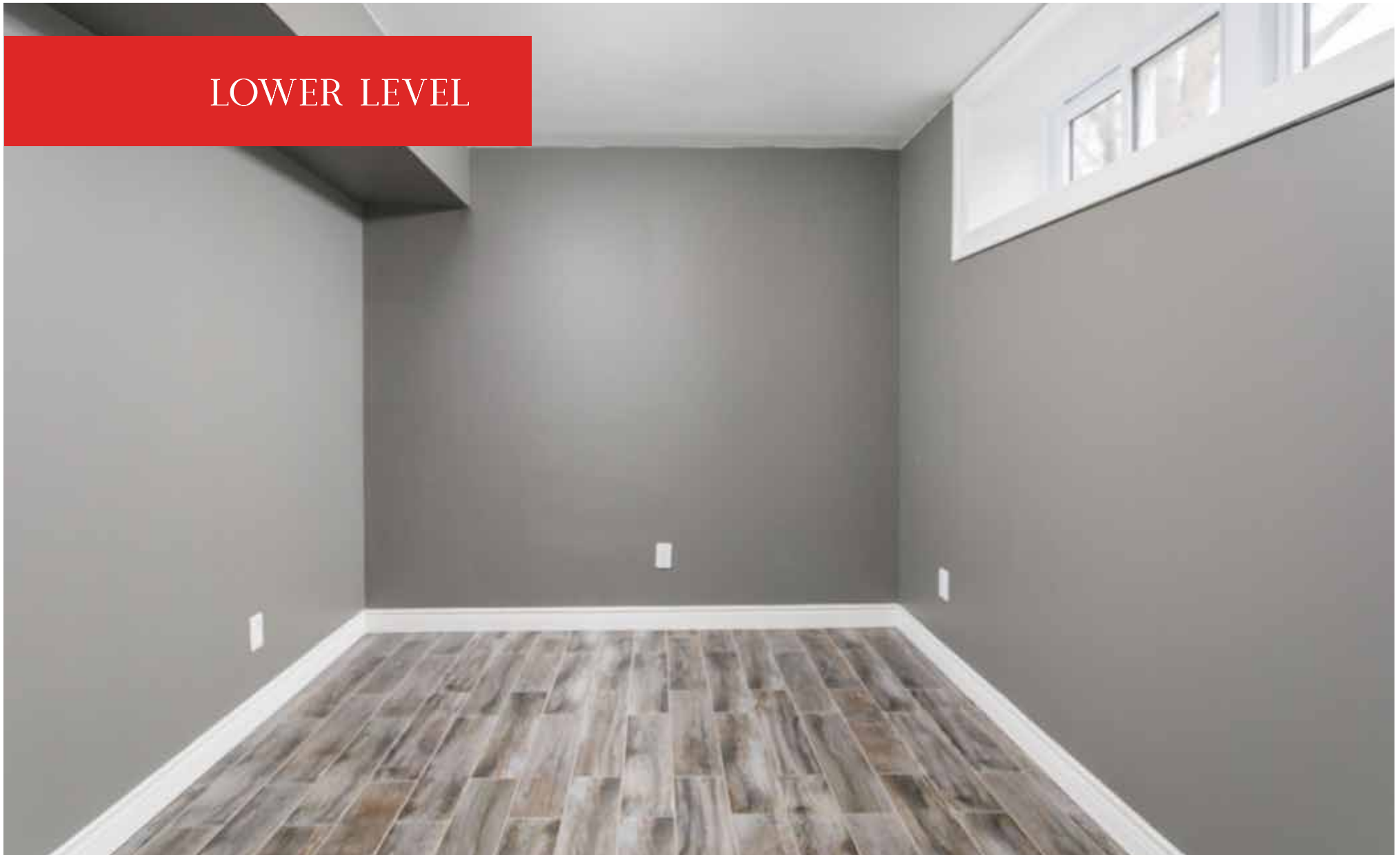


BEDROOM 4 (10'5" X 11'5")

- Upgraded hardwood floor
- Extra-large window
- Chandelier

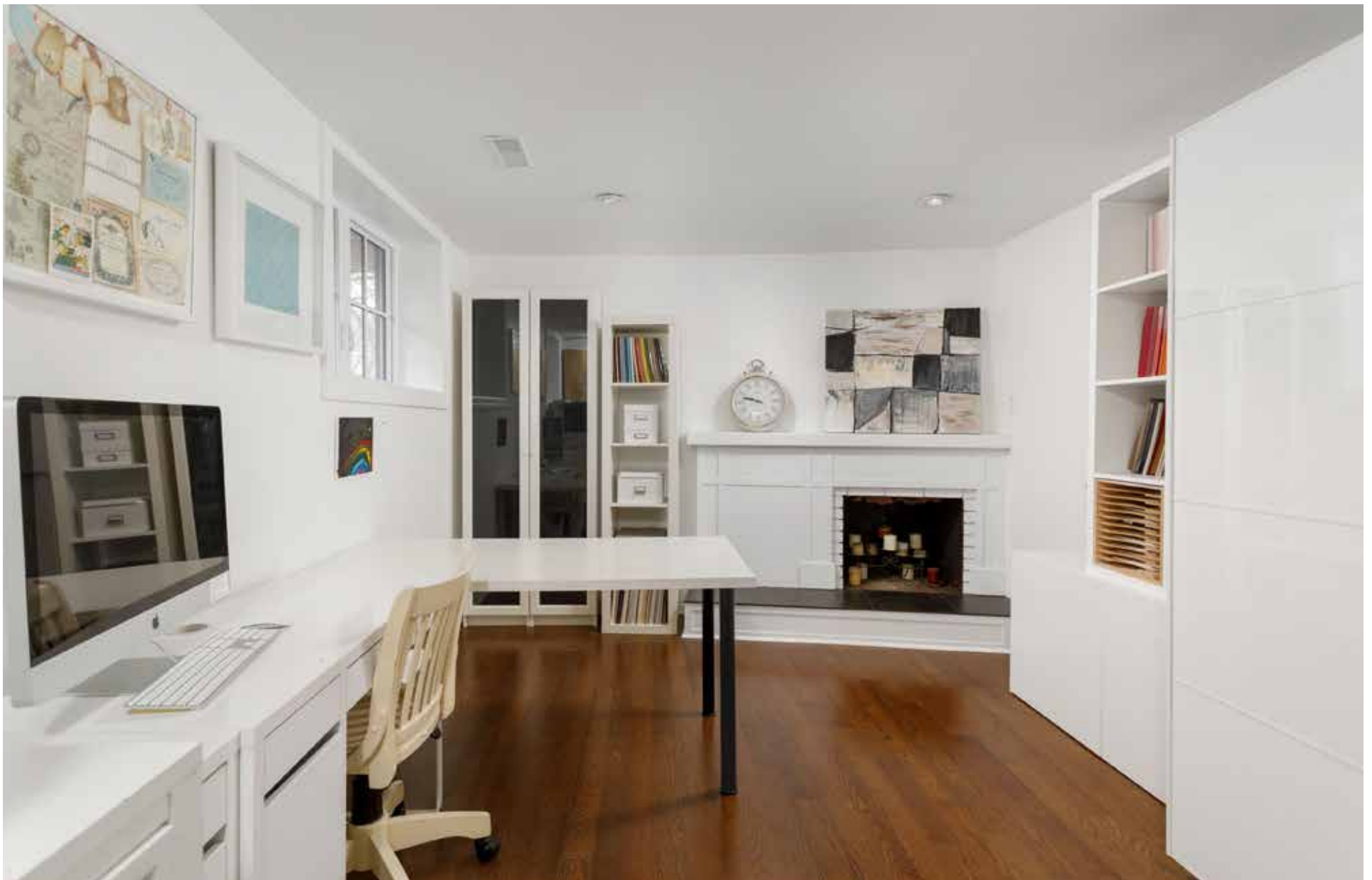


LOWER LEVEL



OFFICE (10'3" X 8'6")

- Upgraded ceramic floor tiles
- Large window



FAMILY ROOM (18'2" X 10'9")

- Two large above grade windows
- Pot lights
- Upgraded hardwood floor
- French door to the hall area with exterior door and access to the basement





BATHROOM (2-PIECE)

- Sleek cabinetry with a one-piece moulded vanity with integrated sink
- Neutral wood-look floor tiles
- Window

BASEMENT



RECREATION ROOM (18'8" X 9'7")

- Pot lights
- Upgraded laminate flooring
- Access doors to two storage rooms and the laundry/utility room





SCHOOLS

Elementary

Gladys Speers – English – JK – GR06

Eastview – English – GR07 – 08

Pine Grove – French Immersion – GR02 - 08

St. Nicholas CES – English – JK – Gr08

ExF – GR05 - 08

St. Mary CES – French Immersion – GR01 - 08

Secondary

Thomas A. Blakelock – English/French Immersion – GR09 - 12





Taxes: \$5,038 / 2024

Inclusions: Fridge, stove, built-in dishwasher, built-in microwave, washer, dryer, electric light fixtures, window coverings, electric garage door opener

Exclusion: Chandelier in girls bedroom

FLOOR PLANS



All room dimensions and floor areas must be considered approximate and are subject to independent verification.





RINA DIRISIO
SALES REPRESENTATIVE
LIFETIME RESIDENT OF OAKVILLE

CELL 416.804.4347
EMAIL RINA@RINA.CA

251 NORTH SERVICE ROAD WEST
OAKVILLE ONTARIO L6M 3E7

Royal LePage Real Estate Services Ltd., Brokerage

RINA.CA

WE SELL REAL ESTATE BUT BETTER.



Information in this brochure is deemed accurate but not guaranteed.
School boundaries may change for upcoming school year.